

# ATTACHMATE. EXTRA!

## Bundle for TCP/IP

Windows, Windows NT, Windows 95

version 6.2

### Enterprise-strength TCP/IP connectivity for IBM, DEC/VAX, and UNIX.

For organizations standardizing on the TCP/IP networking protocol, EXTRA! Bundle for TCP/IP provides full function access to enterprise host data, network resources and the Internet. It includes a powerful TCP/IP stack and applications, such as NFS and FTP, plus your choice of popular Web browsers for Internet access. Both Microsoft Internet Explorer and Netscape Navigator are included.

- **EXTRA! 16- and 32-bit mission-critical host access**
- **Host Connectivity**
  - TN3270E
  - TN5250
  - TNVT340
  - TNVT420
  - TCP/IP to the Attachmate gateway
  - TCP/IP to NetWare SAA Gateway
  - TCP/IP to Microsoft SNA Server
  - NCIA
  - AnyNet (MPTN) support
- **Host Graphics**
- **Light Pen Support**
- **PathWay VxD TCP/IP stack**
- **Drag-and-Drop FTP**
- **LPR/LPD**
- **NFS Client**
- **Netscape Navigator**
- **Microsoft Internet Explorer**

No company is better positioned to help you improve productivity, reduce complexity, and lower the cost of using, managing, and supporting enterprise-wide information systems. Attachmate understands TCP/IP inside and out. With EXTRA! Bundle for TCP/IP, you can capitalize on our core expertise in enterprise connectivity and first-hand experience in designing and delivering integrated, mission critical solutions.

### Add high performance, reliable TCP/IP technology to your enterprise.

Giving you the flexibility to standardize on the TCP/IP networking protocol, EXTRA! Bundle for TCP/IP provides high performance, reliable network connectivity for both LAN and mobile users. Memory-efficient technology provides you with better overall performance. The VxD architecture consumes less base memory than DLL and TSR stacks, giving you superior speed and performance.

### Full TCP/IP connectivity for multi-host access.

EXTRA! Bundle for TCP/IP includes multi-host access based on EXTRA! technology, the most respected host access solution in the industry. It provides a comprehensive host access solution for connecting over and standardizing on TCP/IP. Telnet, TCP/IP-to-gateway connectivity and IBM AnyNet (MPTN) support ensures full feature host access no matter how you have chosen to implement TCP/IP within your organization.

### Treat host sessions as documents.

Host sessions can be saved as desktop documents, complete with intuitive and adaptive interfaces. Customized settings allow you to create unique toolbars, hot spots, QuickPad and colors, as well as a list of bookmarks to make host navigation effortless.

### Place bookmarks to access information immediately and automatically.

Bookmarks eliminate tedious navigation through host applications by extending the ease-of-use and simplicity of the browser paradigm to your host systems. Selecting a bookmark transports you directly to a desired location within a host application. It's the easiest possible method for accessing enterprise information residing on IBM mainframe, AS/400 and VAX or UNIX systems.

PRODUCT PROFILE

U.S. and Canadian Sales:  
(800) 426-6283  
(206) 644-4010  
Fax: (206) 747-9924  
Customer Support:  
(800) 688-3270  
FaxBack:  
(206) 649-6595  
World Wide Web:  
www.attachmate.com

Australia (Melbourne)  
(61) 39 694 6711

Australia (Sydney)  
(61) 2 9975 7188

Belgium  
(32) 2-481 07 50

Brazil  
(55) 11 532-2830

Denmark  
(45) 42 17 10 00

Finland  
(358) 0437 5236

France  
(33) 1 4604 1010

Germany  
(49) 89 99 351-0

Hong Kong  
(852) 2 572-8988

Italy  
(39) 2 6713101

Japan  
(81) 3 5560 8970

Latin America  
(305) 358 7830

Malaysia  
(603) 245 5660

Mexico  
(52) 5 208 0360

Netherlands  
(31) 20 696 6031

Norway  
(47) 22 91 06 00

Portugal  
(351) 1 7928750

Singapore  
(65) 223 0233

South Africa  
(27)11 784 0414

Spain  
(34) 1 300 86 00

Sweden  
(46) 8 6307530

Switzerland (Zurich)  
(41) 1 289 90 11

Switzerland (Geneva)  
(41) 22 879 04 10

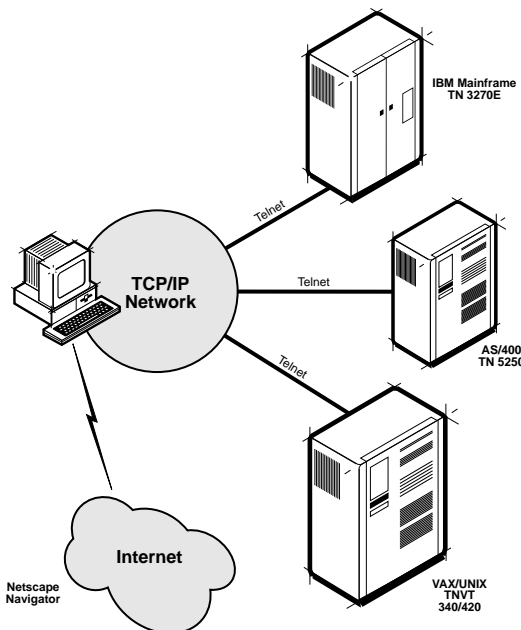
United Kingdom  
(44) 1189 890 390

### Access network resources such as NFS and FTP servers.

Users of Windows 3.1 and Windows 95 can access virtual LAN drives on a UNIX machine or on a PC that is running compatible NFS server software. The EXTRA! Bundle for TCP/IP includes a 16- and 32-bit NFS Client. FTP client and server applications bring FTP resources to your desktop with drag-and-drop ease.

### Award-winning solutions and support.

Attachmate is the leading supplier of enterprise information access software and services to major corporations, large organizations and government agencies worldwide. The company's desktop-to-host connectivity solutions, object-oriented client and server software, authoring tools, management software, and hardware adapters extend mission-critical applications and data to end users. Attachmate's award-winning solutions allow users anywhere to access business information residing within as well outside their organizations.



For first-time installations of Attachmate software, we offer 30 days of complimentary SUPPORTWARE!®, a service that helps you get up and running and keeps you up-to-date. Attachmate offers a full spectrum of SUPPORTWARE! plans – Enhanced, Elite, Strategic, and Global – tailored to meet your organization's unique needs.

### Call today for more information.

For more information about the EXTRA! Bundle for TCP/IP, contact your local Attachmate reseller or call us toll-free in the United States or Canada at **1-800-426-6283**. For International Sales information, call USA **206-644-4010** or contact your nearest sales office.

### Features at a Glance

#### EXTRA! Bundle for TCP/IP

##### Multiple Host Support

- Mainframe
- IBM AS/400
- VAX/UNIX
- Internet/World Wide Web

##### TCP/IP Connectivity Support

- Telnet
  - TN3270E
  - TN5250
  - TNVT340
- TCP/IP to gateway support
  - Attachmate gateway
  - NetWare for SAA
  - MS® SNA Server
- NCIA
- MPTN

##### Applications, Utilities and Tools

- FTP Client/Server
- NFS
- LPR/LPD
- DHCP
- SLIP/CSLIP/PPP
- Silent install (unattended installation)
- Automatically senses operating system in install

##### System Requirements

- Windows 3.x: 386/SX 33 MHz PC running Windows 3.1 or Windows for Workgroups 3.11 with 8 MB RAM
- Windows 95: 486/DX 33 MHz PC running Windows 95 with 12 MB RAM
- Windows NT: 486/DX 33 MHz PC running Windows NT 3.51 with 16 MB RAM

 **Attachmate**  
Attachmate Corporation  
3617 131st Ave SE  
Bellevue, WA 98006 USA

© 1997 Attachmate Corporation. All Rights Reserved. Printed in the USA. Attachmate, EXTRA! and SUPPORTWARE! are registered trademarks and QuickPad is a trademark of Attachmate Corporation. DEC and VAX are registered trademarks of Digital Equipment Corporation. IBM, AnyNet, AS/400 and SAA are registered trademarks of International Business Machines Corporation. Microsoft, MS, Windows and Windows NT are registered trademarks of Microsoft Corporation. Netscape Navigator is a trademark of Netscape Communications Corporation. NetWare is a registered trademark of Novell, Inc. NFS is either a trademark or a registered trademark of Sun Microsystems, Inc., in the United States or other countries. UNIX is a registered trademark in the United States and other countries, licensed exclusively through X/Open Company, Ltd. All other trademarks or registered trademarks are the property of their respective owners.